

## Instalación cable de programación TX-790

Descargar el driver de la página de [www.syscom.mx](http://www.syscom.mx) en la sección de descargas de cualquiera de los dos vínculos:

<https://www.syscom.mx/producto/TX790U-TXPRO-218196.html>

<https://www.syscom.mx/producto/W-103K-TXPRO-226819.html>

Descargar y descomprimir el archivo:

▼ Today (1)

C7000 USB DRIVER (1)

Ejecutar y guardar el archivo

his PC > Downloads > C7000 USB DRIVER (1) > C7000 USB DRIVER > DRIVER

| Name           | Date modified          | Type        | Size     |
|----------------|------------------------|-------------|----------|
| usblib_hrc7000 | 04/06/2024 09:38 a. m. | Application | 5,010 KB |

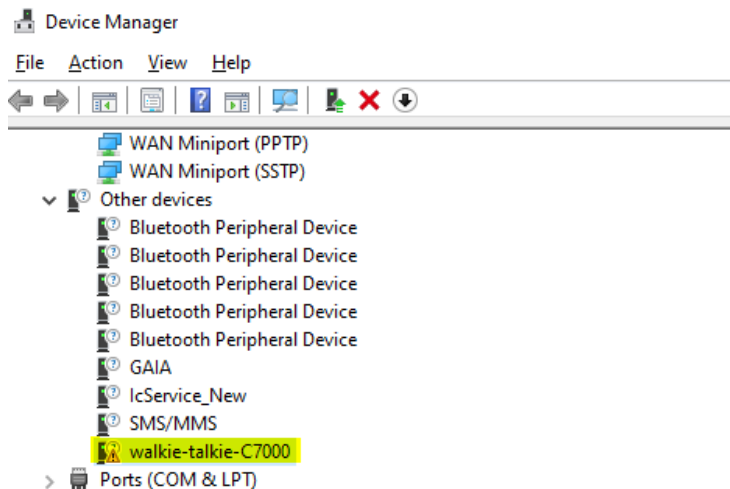
### Conectar el cable de programación y el radio al cable, encender el radio:

Este archivo solicitará un directorio para guardar el archivo del driver.

Y al guardarlo aparecerá de la siguiente manera en la dirección asignada.


walkie-talkie-C7000

Ingresa a Device Manager (Administrador de Dispositivos)



Clic derecho sobre walkie talkie-C7000. Actualizar driver

Seleccionar Buscar el driver en mi PC

 Update Drivers - walkie-talkie-C7000

How do you want to search for drivers?

→ **Search automatically for drivers**  
Windows will search your computer for the best available driver and install it on your device.

→ **Browse my computer for drivers**  
Locate and install a driver manually.

Seleccionar el driver de una lista disponible en mi computadora

×

←  Update Drivers - walkie-talkie-C7000

Browse for drivers on your computer

Search for drivers in this location:

C:\Program Files (x86)\Harris MASTR V Drivers

Browse...

Include subfolders

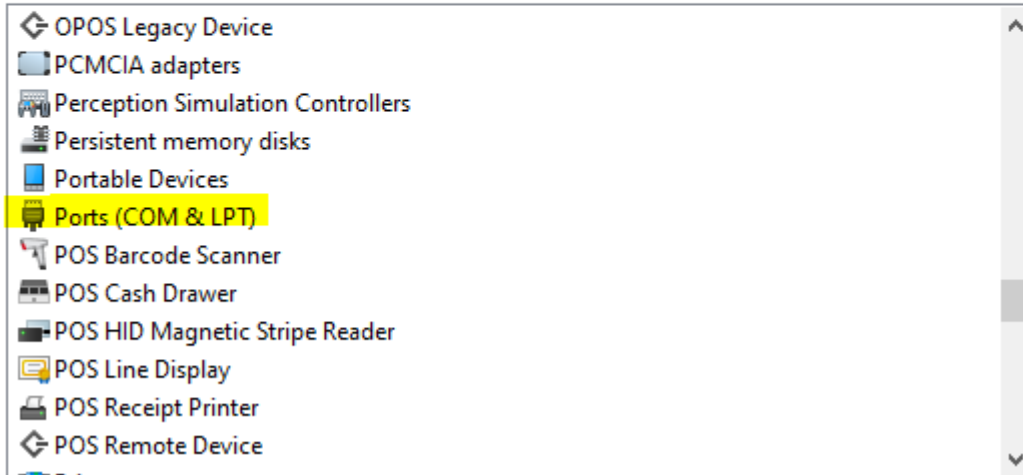
→ **Let me pick from a list of available drivers on my computer**  
This list will show available drivers compatible with the device, and all drivers in the same category as the device.

Seleccionar el tipo de dispositivo de la lista.

← Update Drivers - walkie-talkie-C7000

Select your device's type from the list below.

Common hardware types:



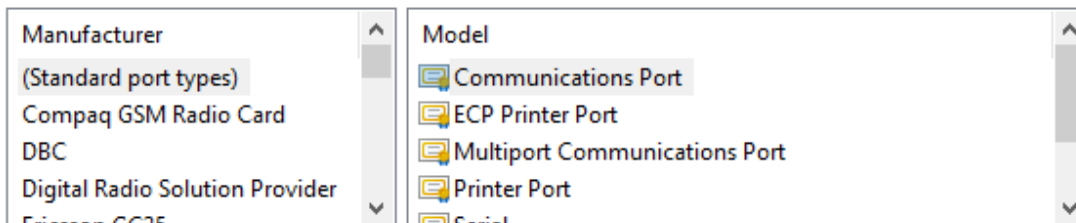
Seleccionar como muestra en la imagen:

Update Drivers - walkie-talkie-C7000

Select the device driver you want to install for this hardware.



Select the manufacturer and model of your hardware device and then click Next. If you have a disk that contains the driver you want to install, click Have Disk.



This driver is digitally signed.

[Tell me why driver signing is important](#)

Have Disk...

Buscar el directorio donde se guardó el archivo del driver, seleccionar y aceptar.

### Select the device driver you want to install for this hardware.



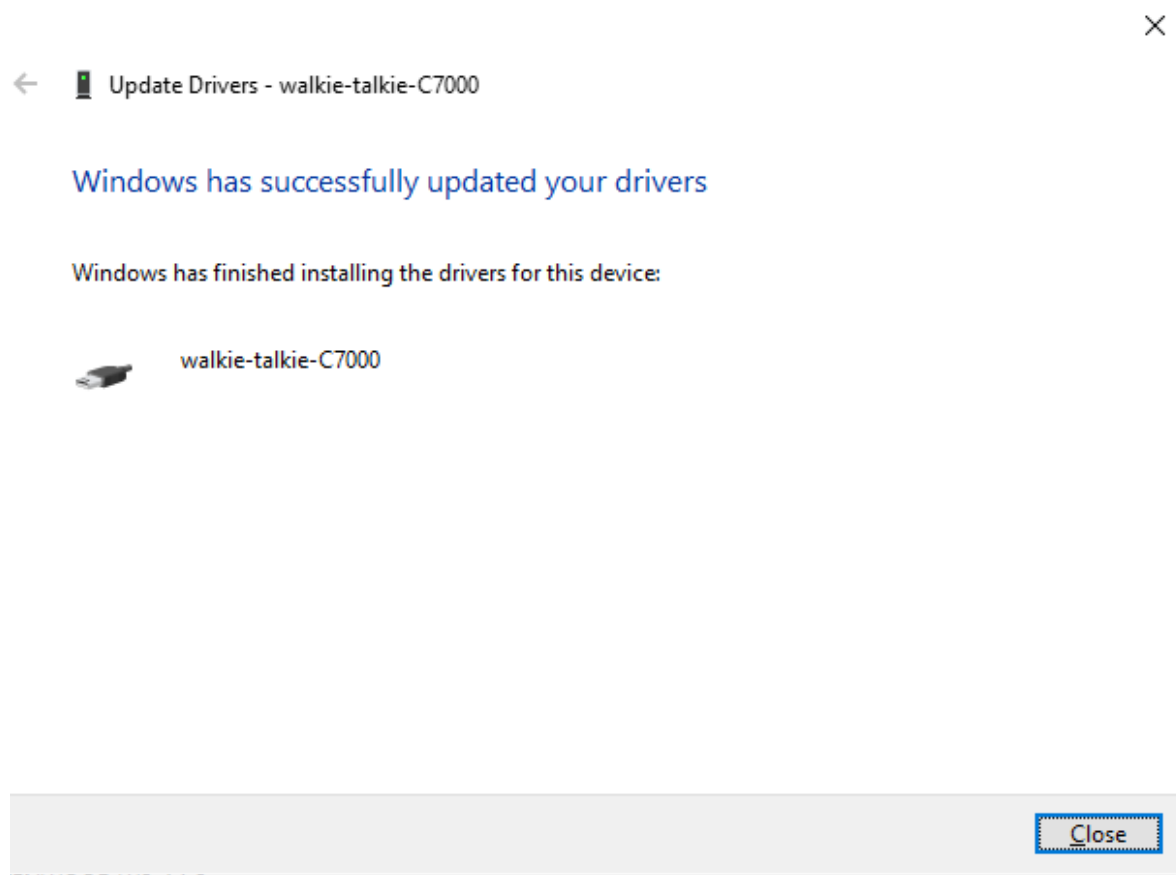
Select the manufacturer and model of your hardware device and then click Next. If you have a disk that contains the driver you want to install, click Have Disk.

Show compatible hardware

Model

 walkie-talkie-C7000


Dar clic en continuar



Update Drivers - walkie-talkie-C7000

Windows has successfully updated your drivers

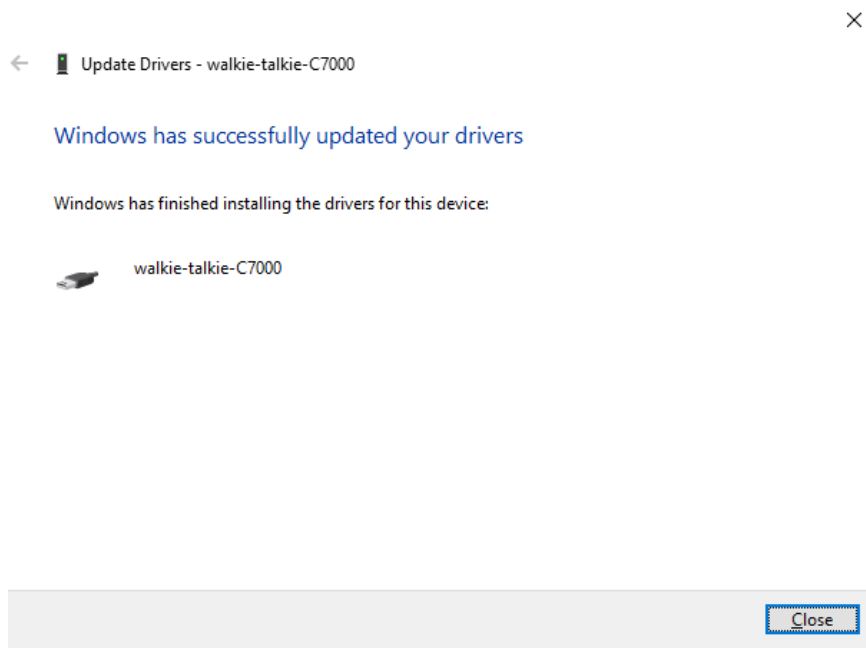
Windows has finished installing the drivers for this device:

 walkie-talkie-C7000

Close

Deberá aparecer que el driver se instaló o actualizó correctamente:

Cerrar para finalizar



En el administrador de dispositivos aparecerá de la siguiente manera:

